



Lakenheath, Brandon, IP27 9JD

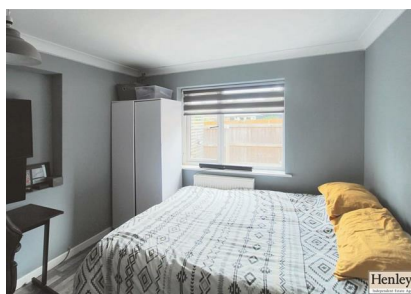
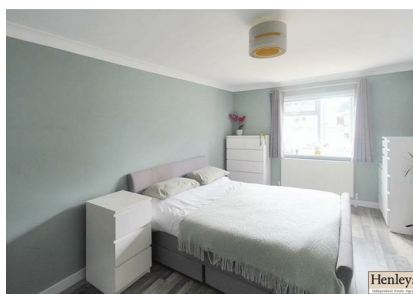
Rent - Asking Price £340,000

Deposit -

Situated in a quiet cul-de-sac, this spacious four-bedroom detached bungalow offers well-planned and versatile accommodation, ideal for families or those seeking single-level living.

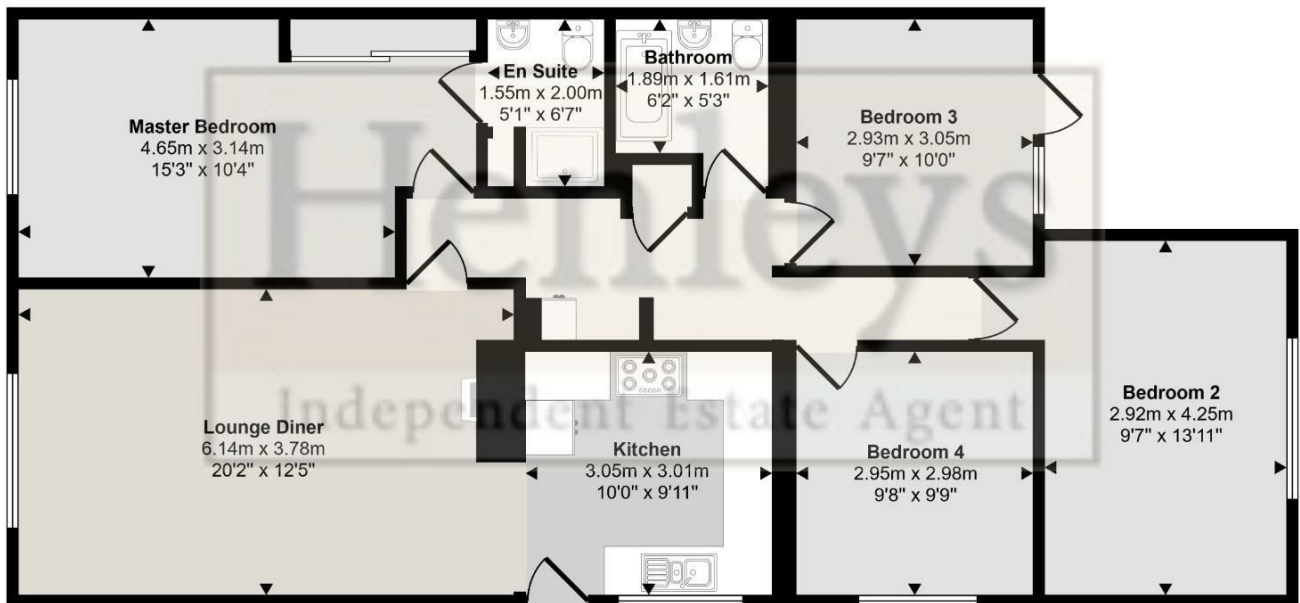
The property features a bright and modern open-plan kitchen/living area, providing an excellent space for everyday living and entertaining. There are four generously sized double bedrooms, offering flexibility for home working, guest accommodation or family use.

- QUIET CUL-DE-SAC LOCATION
- OPEN PLAN KITCHEN / LIVING ROOM
- MODERN AND VERSATILE LIVING SPACE
- LOW MAINTENANCE COURTYARD STYLE GARDEN
- PEACEFUL RESIDENTIAL SETTING
- SPACIOUS FOUR BEDROOM DETACHED BUNGALOW
- FOUR GENEROUS DOUBLE BEDROOMS
- AMPLE OFF-ROAD PARKING
- IDEAL FOR FAMILIES OR DOWNSIZERS
- CONVENIENT ACCESS TO LOCAL AMENITIES AND TRANSPORT LINKS



Council Tax Band: B - EPC Rating: D 67

Approx Gross Internal Area
102 sq m / 1097 sq ft



Floorplan

This floorplan is only for illustrative purposes and is not to scale. Measurements of rooms, doors, windows, and any items are approximate and no responsibility is taken for any error, omission or mis-statement. Icons of items such as bathroom suites are representations only and may not look like the real items. Made with Made Snappy 360.

